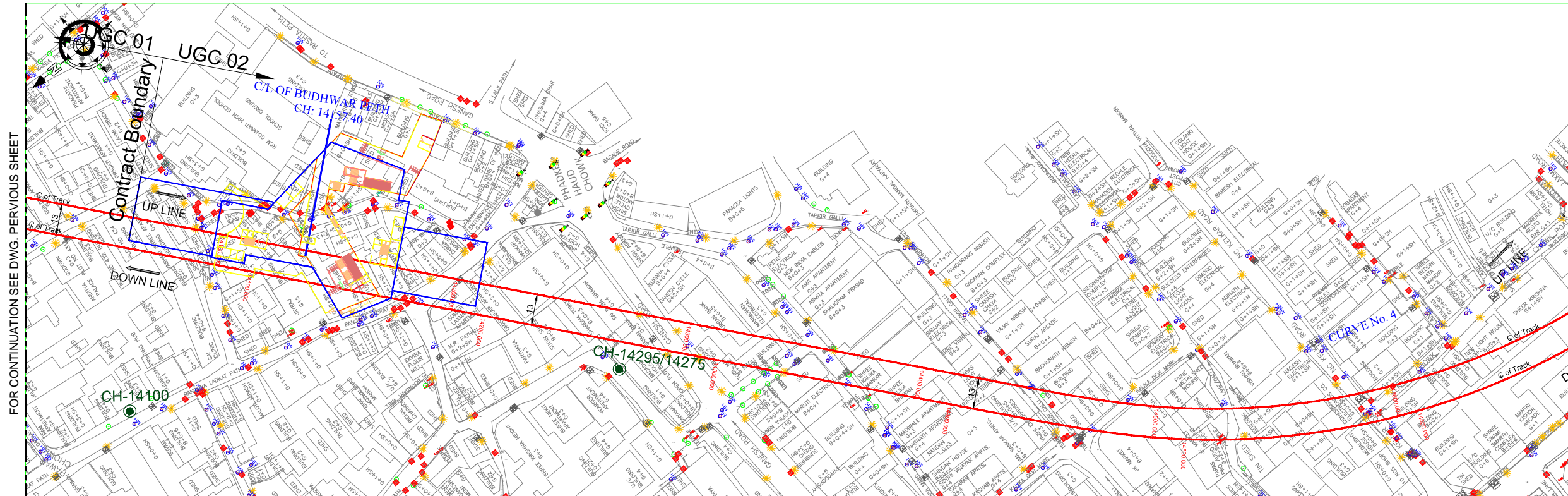
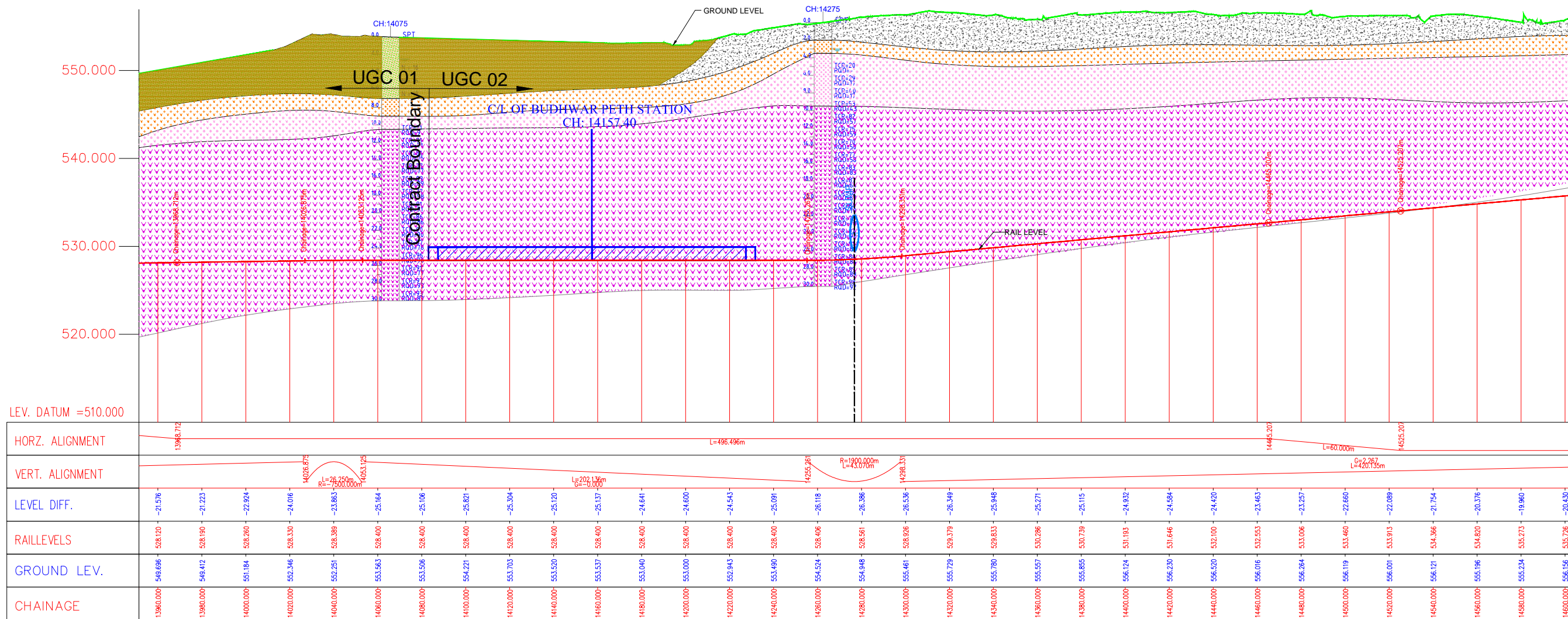


# Annexure - 6



- LEGEND:**
- GROUND LEVEL
  - RAIL LEVEL
  - FILL / MADE GROUND
  - SANDY CLAY
  - CLAY WITH GRAVEL
  - SILTY CLAY
  - CROSS PASSAGE
  - GRAVEL
  - SANDY WITH GRAVELS
  - SILTY SAND / SOIL
  - WEATHERED / DISINTEGRATED ROCK
  - FRACTURED ROCK
  - AMYGDALOIDAL / COMPACT BASALT
  - EXISTING BOREHOLE



SYSTRA, AECOM, EGIS, RITES.

INTERIM CONSULTANCY SERVICES  
FOR PUNE METRO LINE 1  
PIMPRI-CHINCHWAD TO SWARGATE

REV.	DATE	PREP.	APPROVED	DESCRIPTION
R1	10.07.18	DB	AC	ISSUED FOR TENDER CORRIGENDUM
R0	26.12.17	DB	AC	TENDER DRAWING

NAME	SIGN
DRAWN BY	DB
DESIGN BY	OD
CHECKED BY	EM
APPROVED BY	AC

PROJECT	PUNE METRO LINE 1 PIMPRI-CHINCHWAD TO SWARGATE
DRAWING TITLE	GEOLOGY AND GEOTECHNICS PLAN VIEW AND LONGITUDINAL SECTION
DRAWING NO	PML-1-IC-GP-UGC-0221_R1

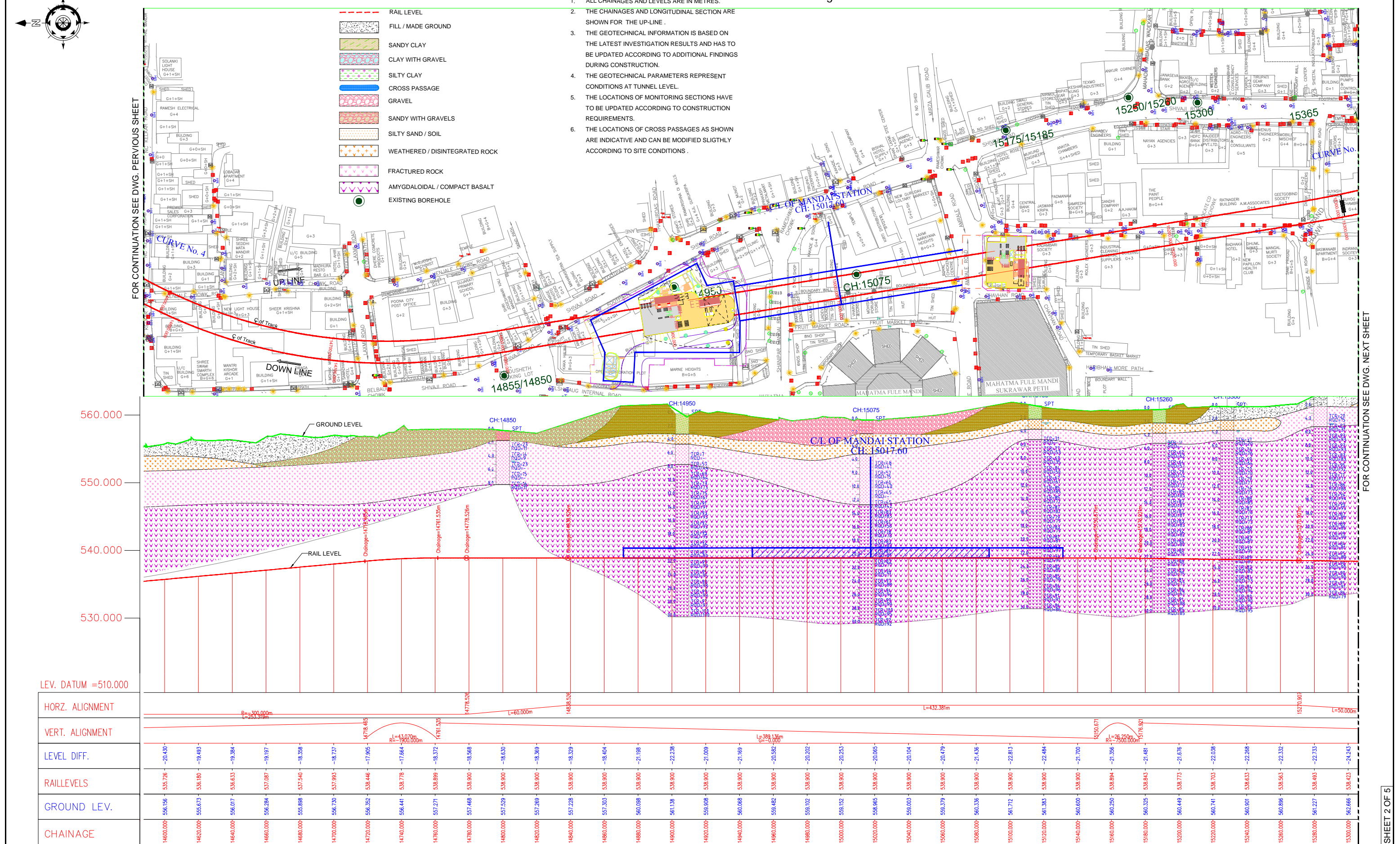
DATE  
10/07/2018

SCALE  
H-1:1000,



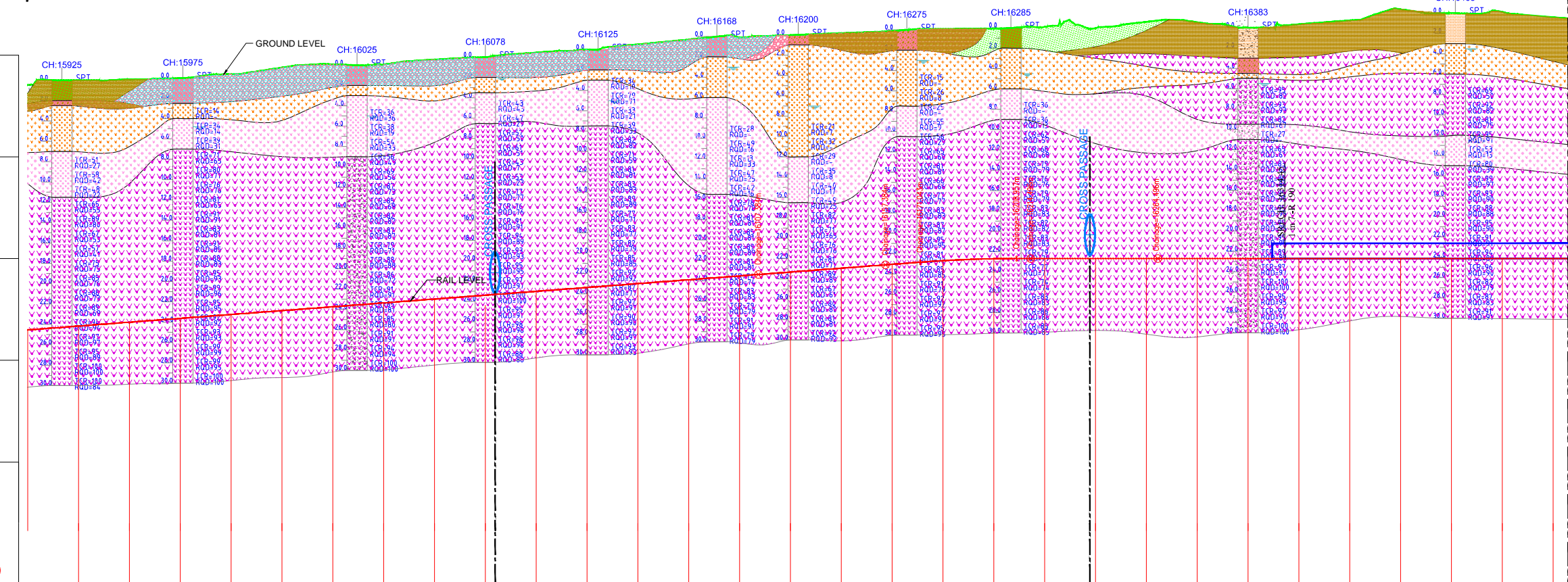
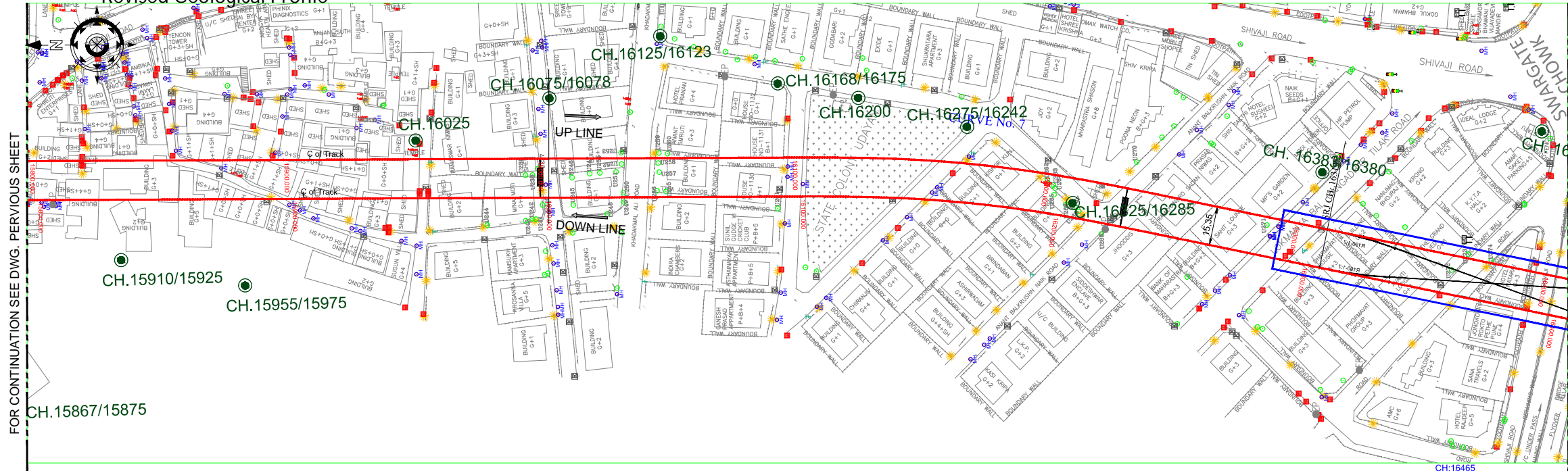
MAHARASHTRA METRO  
RAIL CORP. LTD.

PUNE METRO





**MAHARASHTRA METRO  
RAIL CORP . LTD.  
PUNE METRO**



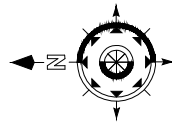
LEV. DATUM =510.000	
HORZ. ALIGNMENT	L=490.624m
VERT. ALIGNMENT	C=1.896 L=616.158m
LEVEL DIFF.	
RAILLEVELS	
GROUND LEV.	
CHAINAGE	

SYSTRA, AECOM, EGIS, RITES.				NAME	SIGN	PROJECT	DATE
INTERIM CONSULTANCY SERVICES FOR PUNE METRO LINE 1 PIMPRI-CHINCHWAD TO SWARGATE				DRAWN BY	DB	PUNE METRO LINE 1 PIMPRI-CHINCHWAD TO SWARGATE	10/07/2018
				DESIGN BY	OD	GEOLOGY AND GEOTECHNICS PLAN VIEW AND LONGITUDINAL SECTION	SCALE H-1:1000,
				CHECKED BY	EM		
				APPROVED BY	AC		
REV.	DATE	PREP.	APPROVED	DESCRIPTION		DRAWING NO	PML-1-IC-GP-UGC-0224_R1
R1	10.07.18	DB	AC	ISSUED FOR TENDER CORRIGENDUM			
R0	26.12.17	DB	AC	TENDER DRAWING			

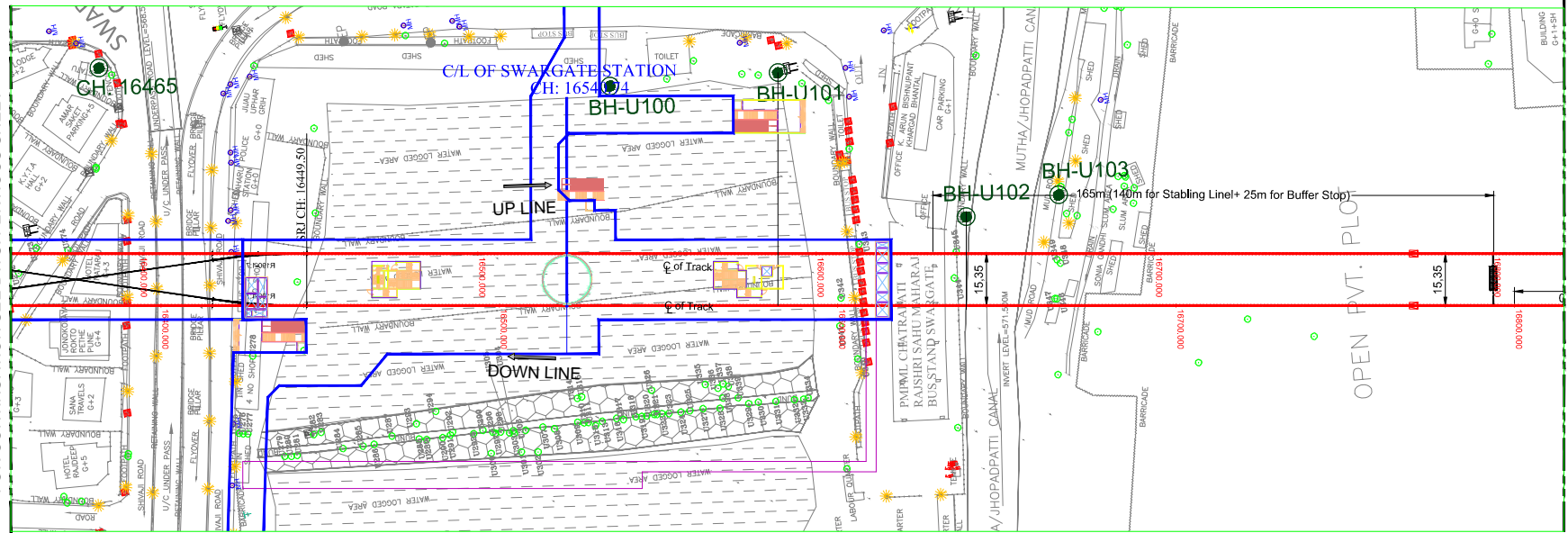
- NOTES:
- ALL CHAINAGES AND LEVELS ARE IN METRES.
  - THE CHAINAGES AND LONGITUDINAL SECTION ARE SHOWN FOR THE UP-LINE.
  - THE GEOTECHNICAL INFORMATION IS BASED ON THE LATEST INVESTIGATION RESULTS AND HAS TO BE UPDATED ACCORDING TO ADDITIONAL FINDINGS DURING CONSTRUCTION.
  - THE GEOTECHNICAL PARAMETERS REPRESENT CONDITIONS AT TUNNEL LEVEL.
  - THE LOCATIONS OF MONITORING SECTIONS HAVE TO BE UPDATED ACCORDING TO CONSTRUCTION REQUIREMENTS.
  - THE LOCATIONS OF CROSS PASSAGES AS SHOWN ARE INDICATIVE AND CAN BE MODIFIED SLIGHTLY ACCORDING TO SITE CONDITIONS.

- LEGEND:
- GROUND LEVEL
  - RAIL LEVEL
  - FILL / MADE GROUND
  - SANDY CLAY
  - CLAY WITH GRAVEL
  - SILTY CLAY
  - CROSS PASSAGE
  - GRAVEL
  - SANDY WITH GRAVELS
  - SILTY SAND / SOIL
  - WEATHERED / DISINTEGRATED ROCK
  - FRACTURED ROCK
  - AMYGDALOIDAL / COMPACT BASALT
  - EXISTING BOREHOLE

TO PCMC



FOR CONTINUATION SEE DWG. PREVIOUS SHEET



UGC-02 - Corrigendum III - Annexure - 6  
Revised Geological Profile

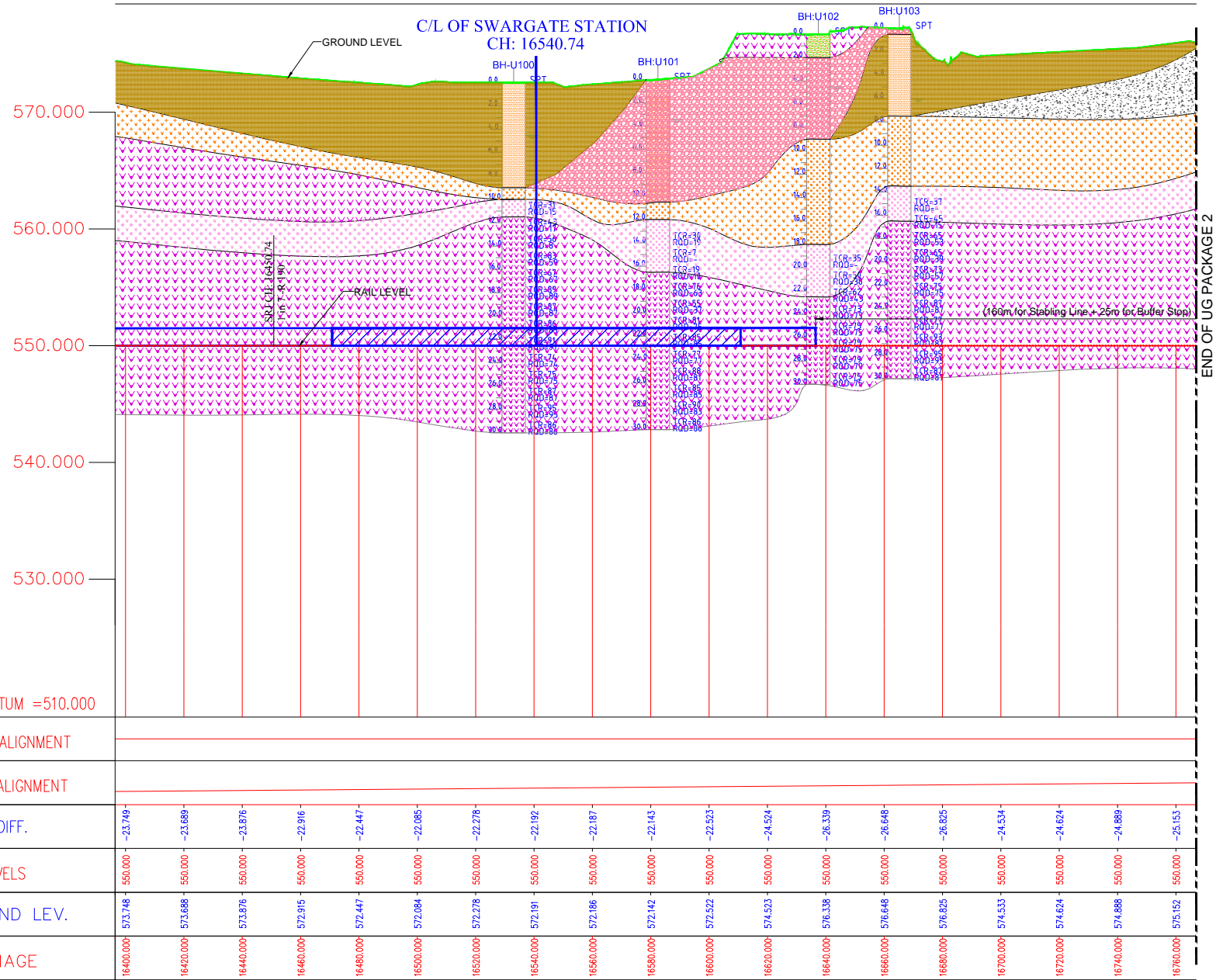
TO SWARGATE

NOTES:

1. ALL CHAINAGES AND LEVELS ARE IN METRES.
2. THE CHAINAGES AND LONGITUDINAL SECTION ARE SHOWN FOR THE UP-LINE.
3. THE GEOTECHNICAL INFORMATION IS BASED ON THE LATEST INVESTIGATION RESULTS AND HAS TO BE UPDATED ACCORDING TO ADDITIONAL FINDINGS DURING CONSTRUCTION.
4. THE GEOTECHNICAL PARAMETERS REPRESENT CONDITIONS AT TUNNEL LEVEL.
5. THE LOCATIONS OF MONITORING SECTIONS HAVE TO BE UPDATED ACCORDING TO CONSTRUCTION REQUIREMENTS.
6. THE LOCATIONS OF CROSS PASSAGES AS SHOWN ARE INDICATIVE AND CAN BE MODIFIED SLIGHTLY ACCORDING TO SITE CONDITIONS.

LEGEND:

- GROUND LEVEL
- RAIL LEVEL
- FILL / MADE GROUND
- SANDY CLAY
- CLAY WITH GRAVEL
- SILTY CLAY
- CROSS PASSAGE
- GRAVEL
- SANDY WITH GRAVELS
- SILTY SAND / SOIL
- WEATHERED / DISINTEGRATED ROCK
- FRACTURED ROCK
- AMYGDALOIDAL / COMPACT BASALT
- EXISTING BOREHOLE



LEV. DATUM =510.000

HORZ. ALIGNMENT

VERT. ALIGNMENT

LEVEL DIFF.

RAILLEVELS

GROUND LEV.

CHAINAGE

SYSTRA, AECOM, EGIS, RITES.

INTERIM CONSULTANCY SERVICES  
FOR PUNE METRO LINE 1  
PIMPRI-CHINCHWAD TO SWARGATE

REV.	DATE	PREP.	APPROVED	DESCRIPTION
R1	10.07.18	DB	AC	ISSUED FOR TENDER CORRIGENDUM
R0	26.12.17	DB	AC	TENDER DRAWING

NAME	SIGN
DRAWN BY	DB
DESIGN BY	OD
CHECKED BY	EM
APPROVED BY	AC

PROJECT	PUNE METRO LINE 1 PIMPRI-CHINCHWAD TO SWARGATE
DRAWING TITLE	GEOLOGY AND GEOTECHNICS PLAN VIEW AND LONGITUDINAL SECTION
DRAWING NO	PML1-IC-GP-UGC-0225_R1

DATE  
10/07/2018

SCALE  
H-1:1000,



MAHARASHTRA METRO  
RAIL CORP . LTD.  
PUNE METRO